

PISSOURI BAY  
DIVERS

# BEST OF CYPRUS

2023

CUSTOMISABLE GROUP TRIPS



ONE LIFE LIVE IT

## 5 - 6 DAY DIVING PACKAGE

**FROM € 700/PAX**

- ZENOBIA WRECK
- ELPIDA WRECK
- JUBILEE SHOALS - CAVE & AIRCRAFT
- LIMASSOL WRECKS MARINE PARK
- MUSAN / GREEN BAY

### CONTACT INFO:

(+357) 96 530 761

[INFO@PISSOURIBAYDIVERS.COM](mailto:INFO@PISSOURIBAYDIVERS.COM)

[WWW.PISSOURIBAYDIVERS.COM](http://WWW.PISSOURIBAYDIVERS.COM)

### PISSOURI BAY, CYPRUS

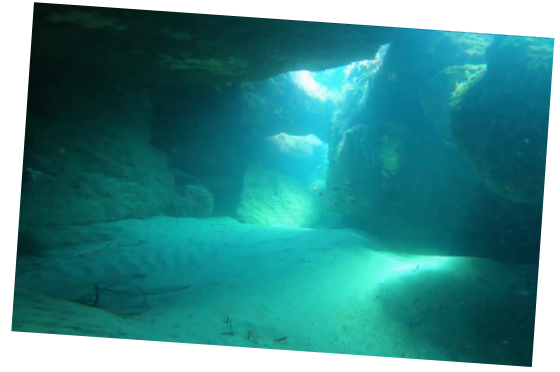
CONVENIENT TO BOTH PAPHOS &  
LARNACA AIRPORTS

**BOOK NOW | PAY LATER**



# BEST OF CYPRUS - DIVE SITES

**AIRPORT REEF** is one of our favourite local shore dives. The rocky entry is quickly forgotten as you descend into a maze of brilliant topography and abundant marine life. Two routes here highlight the swimthroughs, reef and ancient anchor. With a max depth of 16 meters, this is a perfect site for your group to complete a check-out dive and dial in weighting before an adventurous week.



**MS ZENOBIA** is one of the jewels of Cyprus. Repeatedly named a top 10 wreck dive in the world, A 200m by 20m cargo ship that sunk on its second voyage in 1980. The bottom is 40m and the top rail at 18m offering spectacular dives for divers of all levels. Multiple penetration routes include the accomodation, cargo decks, cafeteria, wheelhouse, kissing trucks, lift shaft and more.

**ELPIDA** was purposefully sunk in 2019 to form an artificial reef. As one of the first dive centres to dive her, we continue to regularly visit this site. Penetration of the 63m cargo ship through the cargo hold, engine room and accomodation floors are possible with a max depth of 30m. Marine life such as Octopus, Amberjacks, Nudibranchs, Grouper, Turtles and more are regular sightings.

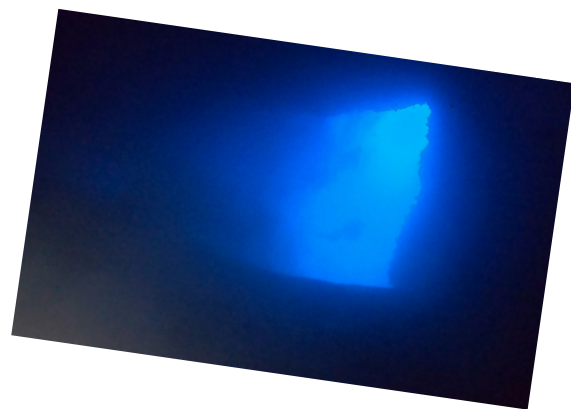


**LIMASSOL WRECKS** This artificial reef was constructed in 2014 and comprises primarily of two wrecks, the Costandis and the Lady Thetis, both lying in 23m and 18m respectively. The Constandis is a 30m Russian trawler which has well established marine life including the famous grouper George who regularly accompanies divers throughout their exploration. The Lady Thetis was a passenger vessel originally constructed in Germany and is 30m long.



**JUBILEE SHOALS** Located right here in Pissouri, we are the only Dive Centre providing regular trips to this site. This wall dive begins as you descend upon Elephant Rock at 18m after which you drop to the entrance of a 60m long swim-through at 38m before exiting through a giant archway.

Multiple routes along this wall dive include Jubilee Arches and the site of a RAF Canberra aircraft. The site attracts amazing aquatic life such as Turtles, Tuna and Dolphins due to the upwelling rich with nutrients.



**MUSAN** The Museum of Underwater Sculptures Ayia Napa opened in 2021 as an artificial reef. This 10m deep site allows divers to tour an underwater forest where they will find 93 works of art by Jason DeCaires Taylor, inspired by nature and man. We typically pair this dive with another popular local shore dive - Green Bay, where another set of statues sit at 12m and are home to a plethora of Sea Turtles.

---

## ABOUT US

Pissouri Bay Divers, in operation since 2009, has been owned by Steve since 2018. Steve has been a passionate SCUBA diver since completing his PADI Open Water course in Hull in 1996, predominantly diving UK waters for the next 8 years.

In 2004 Steve was posted to Cyprus with the British Army and owned his own boat and extensively explored and dived the coastline of Eastern Cyprus and fell in love with the MS Zenobia Shipwreck. After retiring from the Military in 2017, following an extremely eclectic 22-year career, Steve completed his PADI Open Water Instructors course. He worked as an Instructor in Cyprus and further qualified as a Master SCUBA Diver Trainer prior to purchasing Pissouri Bay Divers.

## PISSOURI, CYPRUS

Pissouri Bay is an unspoilt, small and friendly village located approximately half way between Limassol and Paphos, a 20 min drive from Paphos Airport and a 1 hour drive from Larnaca Airport. Pissouri beach, a Blue Flag beach, stands out for its fine golden sand, multi-coloured small pebbles, moderate waves and generally for its crystal clear azure sea. Protected by Cape "Aspro" spectacular white cliffs, one on each side, Pissouri Beach reveals its unique, calm and peaceful profile. Pissouri Bay is host to a variety of restaurants, accomodations, watersports activities, and shops.

